

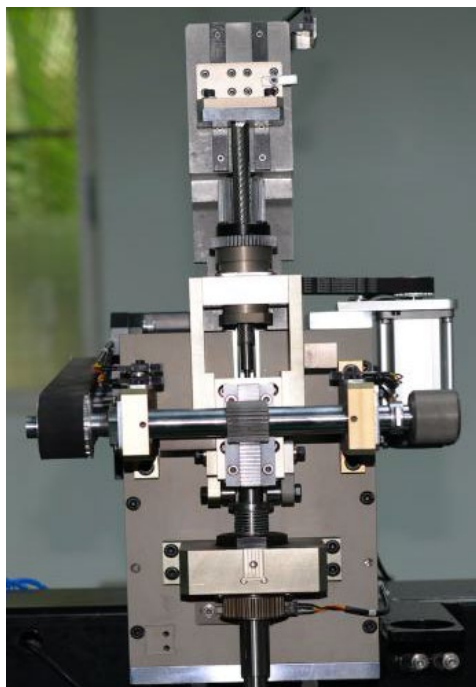


ICT-Z3020 RADIAL INSERTION MACHINE

This Radial Insertion Machine can consistently produce high throughput regardless of component type, with single-, dual-, triple-, and quad-span insertion variants. Lead span capability up to 10mm virtually eliminates tedious manual assembly requirements to improve throughput, product quality and output per floor space, while reducing associated labor costs and time requirements to provide greater returns. The s-3020

delivers exceptional flexibility with over 100 available inputs on the expandable sequencer. An intuitive operator interface that is common with other Generation s-3020 equipment offers easy operation, diagnostics, data management and a graphical product editor.

- Highest Throughput 1800 CPH
- Component replenishment without machine stoppage
- Manual Load or Automatic PCB Load/Unload
- Configurable sequencer (In-Line or Straight-Back)
- Component Verifier
- Simple-to-use operator environment with graphical user interface
- Feeders' options available according to the components of different boards



-Highest Throughput

- 18,000 CPH Spec Speed

-Strong Machine Flexibility

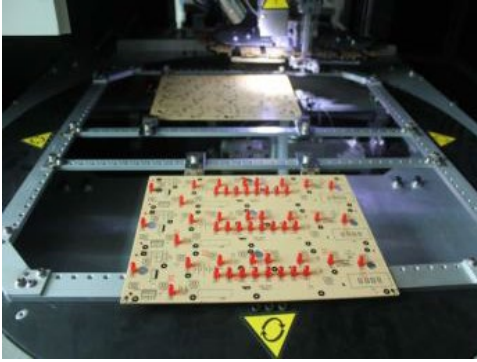
- Expandable from 20 inputs up to 100 inputs
- Inserts at 1 degree increments up to 360 degrees
- Inward clinch option to increase bottom side density

- Lowers Cost of Ownership

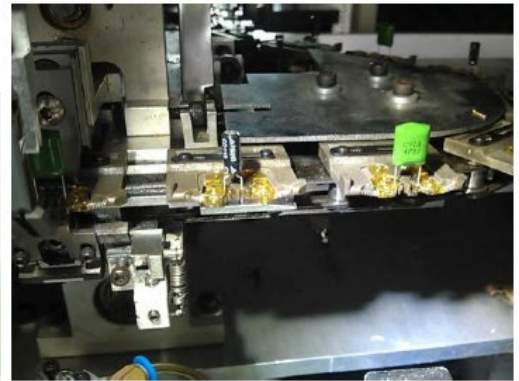
- Low Energy costs.
- Minimal preventative maintenance required.

- Easy to Use User Interface

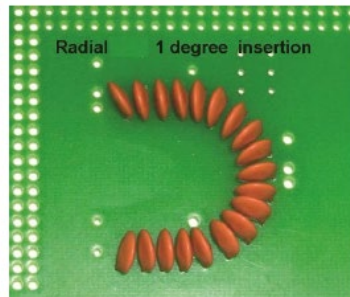
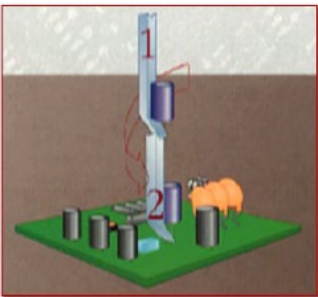
- Easy operation, use Excel program and USB input.
- Off-line programming available
- Components available: Capacitors (electrolytic, ceramic, box, and film), transistors, diodes, LEDs, connectors, tact switches, coils, potentiometers, lamps, fuses, etc



Consistent throughput, regardless of component type or lead span Offers a stand alone machine without a pass-through PCB conveyor. Allows the work board holder to accept up to 4 window's
Delivers a PCBA transfer time of zero



Tooling to accommodate a variety of applications-field reconfigurable
Single Span: 2.5mm Dual Span: 2.5mm/5.0mm Triple Span: 2.5mm/5.0mm/7.5mm

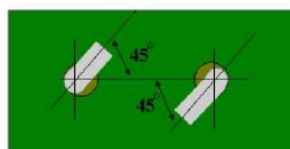
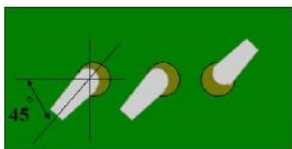


360 Degrees Insertion Angel

Radial: Insertion heads are servo-driver for precise and rapid component insertion. The insertion tooling may be rotated from 0 degree to 360 degrees in 1 degree increments.

N

INWARD



BOTTOM OF PCB

2.5mm Span Standard Configuration

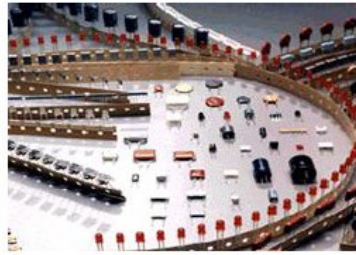
Achieves High Density for tight LED & small applications.

2.5mm span guide jaw with minimal width.

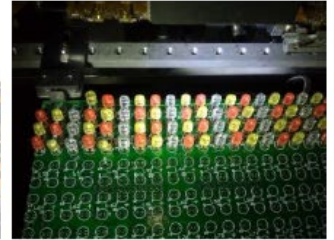
- Inward clinch option to increase bottom side density

- Prevents shorting during wave soldering.

Special asymmetric angles are also available on request.



We can handle bulk components automatically



Specification

Model	S3020
Actual Speed	18000 CPH
Feeders	20
Accuracy	±0.05mm
Plug-in Angle	0-360°
Lead Spacing	2.5mm/5.0mm/ 7.5mm/10mm
Transport Speed	Max 1200mm/s
Component Diameter	Max 10mm

Component Height	20mm
PCB Size	50*50-450*450mm
Cuting Lead Length	1.2-2.2mm
Cuting Lead Angle	5-35°
Air Pressure	4.5~6Kg/cm2
Power Supply	AC:220±10%,50/60HZ,2Kw
Dimension(mm)	L1700*W1500*H1000
Weight	Approx:2100kg